



up to 24°



up to 160mm



Yes



up to +/- 45°



up to +/- 45°



L/P



Black



Yes*



No



11.4kg/LCD



3Years



75x75mm
100x100mm

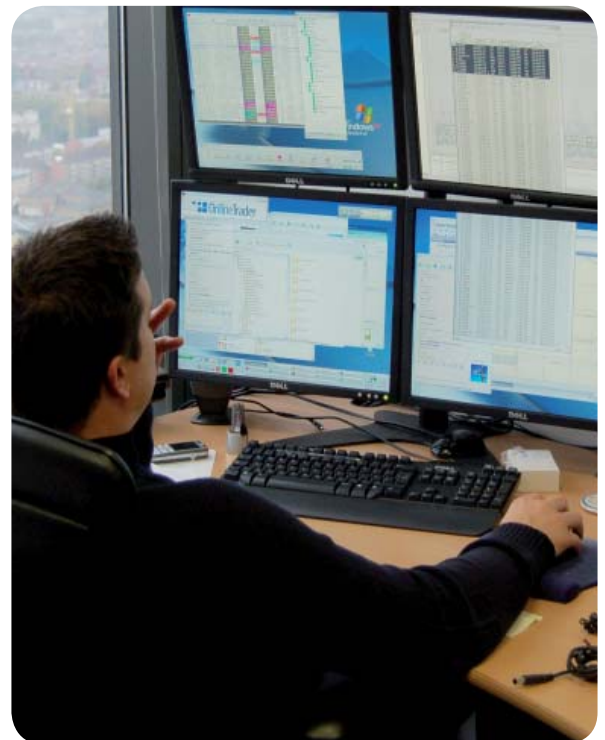


VisionPro 300 Series Multiple LCD Supports

The VisionPro 300 Series Multiple LCD Supports allow the arrangement of multiple LCD monitors in a parabolic placement for simultaneous viewing. Up to eight monitors can be supported on a single configuration.

Angle adjustable horizontal crosswings and adjustable pivot mounts allow monitor bezels to be positioned together and without gaps. Monitors can be configured on one or two levels, therefore fully maximising valuable desk space.

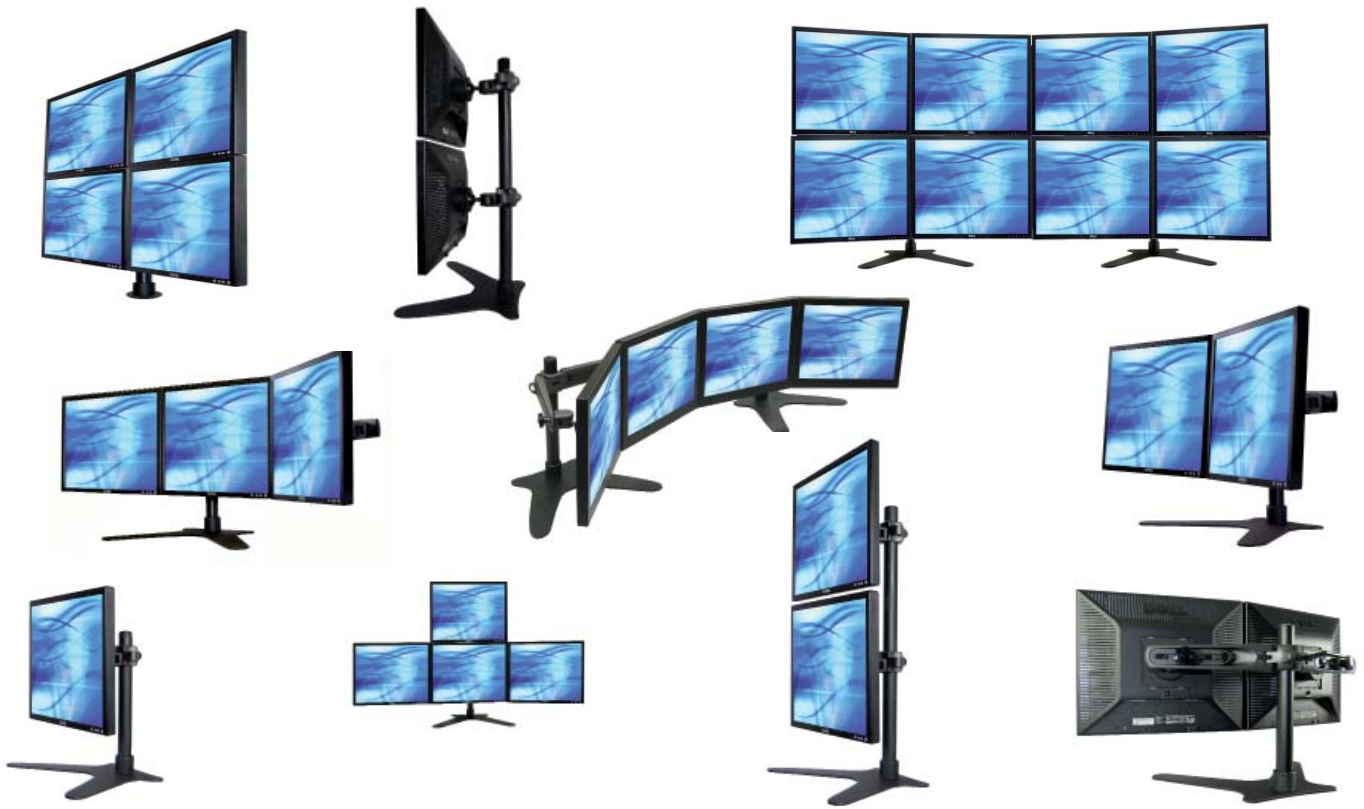
The attractive die-cast aluminium body and joints provide superior strength, durability and the highest quality for commercial applications. The VisionPro 300 Series is also re-configurable as future expansion requirements dictate.



see it your way...

T +44 (0)1252 333326 F +44 (0)1252 330006
E sales@ergomounts.co.uk

www.ergomounts.co.uk www.medicalmounts.co.uk



- Highly adjustable series of multiple monitor supports capable of holding up to 8 LCD monitors.
- Supplied with desk clamp, bolt through, or free-standing base.
- High quality die-cast components.
- Height and reach adjustable.
- Re-configurable design for future expansion.
- 355mm or 710mm (14" or 28") tall poles.
- Supports 1, 2, 3, 4, 5, 6 or 8 LCD monitors.
- Supplied with VESA MIS-D 75mm and 100mm VESA interface plates.
- Each ball joint supports monitors up to 11.4kg.
- Optional EMVP3-VESAEXT extension plates for triple horizontal configurations - extends max monitor width to 515mm per monitor.
- Available in Silver or black finish.

Specifications

Arm Ext.:	0-160mm
Monitor Height Adjust:	Yes
Tilt Adjustment:	+/-45°
Monitor Swivel:	+/-45°
Monitor Orientation:	Landscape to Portrait
Colour:	Black
Touch Screen Stable:	*Certain configurations
Keyboard and Mouse Tray:	No
Max Monitor Weight:	11.4kg per ball joint
Product Warranty:	3 Years

* dependent upon configuration



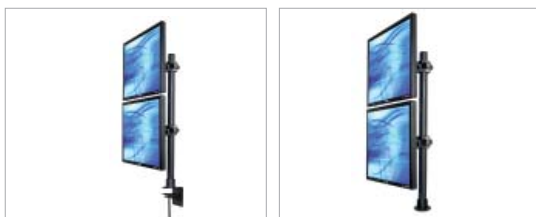
Single Mount **EMVP311 ##**
 Monitors supported **1**
 Max monitor width **570mm**
 Touch screen stable **Yes**
 Max Stand Capacity **11.4kg**

Part Number	Description
EMVP311 FS	VisionPro 311. Single LCD monitor support, 355mm (14") pole, free standing base. Black finish.
EMVP311 DC	VisionPro 311. Single LCD monitor support, 355mm (14") pole, desk clamp fitting. Black finish.
EMVP311 TD	VisionPro 311. Single LCD monitor support, 355mm (14") pole, bolt through desk fitting. Black finish.



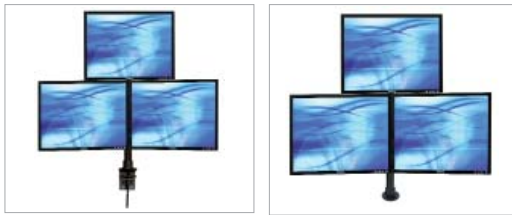
Dual Mount **EMVP312 ##**
 Monitors supported **2**
 Max monitor width **540mm**
 Touch screen stable **No**
 Max Stand Capacity **22.8kg**

EMVP312 FS	VisionPro 312. Dual horizontal LCD monitor support, 355mm (14") pole, free standing base. Black finish.
EMVP312 DC	VisionPro 312. Dual horizontal LCD monitor support, 355mm (14") pole, desk clamp fitting. Black finish.
EMVP312 TD	VisionPro 312. Dual horizontal LCD monitor support, 355mm (14") pole, bolt through desk fitting. Black finish.



Dual Mount **EMVP321 ##**
 Monitors supported **2**
 Max monitor width **570mm**
 Touch screen stable **Yes**
 Max Stand Capacity **22.8kg**

Part Number	Description
EMVP321 FS	VisionPro 321. Dual vertical LCD monitor support, 710mm (28") pole, free standing base. Black finish.
EMVP321 DC	VisionPro 321. Dual vertical LCD monitor support, 710mm (28") pole, desk clamp fitting. Black finish.
EMVP321 TD	VisionPro 321. Dual vertical LCD monitor support, 710mm (28") pole, bolt through desk fitting. Black finish.



Triple Mount **EMVP332 ##**
 Monitors supported **4**
 Max monitor width **435mm (515mm with optional EMVP3-VESAEXT)**
 Touch screen stable **No**
 Max Stand Capacity **34.2kg**

Part Number **Description**
EMVP332 FS VisionPro 332. Triple horizontal LCD monitor support, (2 below, 1 above), 355mm (14") pole, free standing base. Black finish.

EMVP332 DC VisionPro 332. Triple horizontal LCD monitor support, (2 below, 1 above), 355mm (14") pole, desk clamp fitting. Black finish.

EMVP332 TD VisionPro 332. Triple horizontal LCD monitor support, (2 below, 1 above), 355mm (14") pole, bolt through desk fitting. Black finish.



Triple Mount **EMVP313 ##**
 Monitors supported **3**
 Max monitor width **435mm (515mm with optional EMVP3-VESAEXT)**
 Touch screen stable **No**
 Max Stand Capacity **34.2kg**

Part Number **Description**
EMVP313 FS VisionPro 313. Triple horizontal LCD monitor support, 355mm (14") pole, free standing base. Black finish.

EMVP313 DC VisionPro 313. Triple horizontal LCD monitor support, 355mm (14") pole, desk clamp fitting. Black finish.

EMVP313 TD VisionPro 313. Triple horizontal LCD monitor support, 355mm (14") pole, bolt through desk fitting. Black finish.



Quad Mount **EMVP331 ##**
 Monitors supported **4**
 Max monitor width **435mm (515mm with optional EMVP3-VESAEXT)**
 Touch screen stable **No**
 Max Stand Capacity **45.6kg**

Part Number **Description**
EMVP331 FS VisionPro 331. Quad LCD monitor support, (3 below, 1 above), 710mm (28") pole, free standing base. Black finish.

EMVP331 DC VisionPro 331. Quad LCD monitor support, (3 below, 1 above), 710mm (28") pole, desk clamp fitting. Black finish.

EMVP331 TD VisionPro 331. Quad LCD monitor support, (3 below, 1 above), 710mm (28") pole, bolt through desk fitting. Black finish.



Quad Mount **EMVP322 ##**
 Monitors supported **4**
 Max monitor width **540mm**
 Touch screen stable **No**
 Max Stand Capacity **45.6kg**

Part Number	Description
EMVP322 FS	VisionPro 322. Quad LCD monitor support, (2 below, 2 above), 710mm (28") pole, free standing base. Black finish.
EMVP322 DC	VisionPro 322. Quad LCD monitor support, (2 below, 2 above), 710mm (28") pole, desk clamp fitting. Black finish.
EMVP322 TD	VisionPro 322. Quad LCD monitor support, (2 below, 2 above), 710mm (28") pole, bolt through desk fitting. Black finish.



Quad Mount **EMVP314 ##**
 Monitors supported **4**
 Max monitor width **485mm (515mm with optional EMVP3-VESAEXT)**
 Touch screen stable **No**
 Max Stand Capacity **45.6kg**

Part Number	Description
EMVP314 FS	VisionPro 314. Quad horizontal LCD monitor support, 355mm (14") pole, free standing base. Black finish.
EMVP314 DC	VisionPro 314. Quad horizontal LCD monitor support, 355mm (14") pole, desk clamp fitting. Black finish.
EMVP314 TD	VisionPro 314. Quad horizontal LCD monitor support, 355mm (14") pole, bolt through desk fitting. Black finish.



5 Way Mount **EMVP325 ##**
 Monitors supported **5**
 Max monitor width **435mm (515mm with optional EMVP3-VESAEXT)**
 Touch screen stable **No**
 Max Stand Capacity **57kg**

Part Number	Description
EMVP325 FS	VisionPro 325. 5 Way LCD monitor support, (3 below, 2 above), 710mm (28") pole, free standing base. Black finish.
EMVP325 DC	VisionPro 325. 5 Way LCD monitor support, (3 below, 2 above), 710mm (28") pole, desk clamp fitting. Black finish.
EMVP325 TD	VisionPro 325. 5 Way LCD monitor support, (3 below, 2 above), 710mm (28") pole, bolt through desk fitting. Black finish.

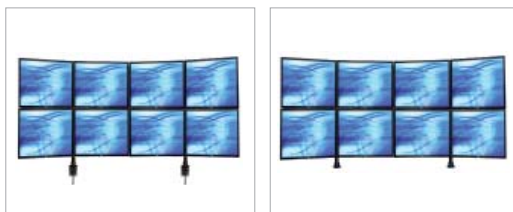


6 Way Mount **EMVP323 ##**
 Monitors supported **6**
 Max monitor width **435mm (515mm with optional EMVP3-VESAEXT)**
 Touch screen stable **No**
 Max Stand Capacity **68.4kg**

Part Number **Description**
EMVP323 FS VisionPro 323. 6 Way LCD monitor support, (3 below, 3 above), 710mm (28") pole, free standing base. Black finish.

EMVP323 DC VisionPro 323. 6 Way LCD monitor support, (3 below, 3 above), 710mm (28") pole, desk clamp fitting. Black finish.

EMVP323 TD VisionPro 323. 6 Way LCD monitor support, (3 below, 3 above), 710mm (28") pole, bolt through desk fitting. Black finish.



8 Way Mount **EMVP324 ##**
 Monitors supported **8**
 Max monitor width **485mm (515mm with optional EMVP3-VESAEXT)**
 Touch screen stable **No**
 Max Stand Capacity **91.2kg**

Part Number **Description**
EMVP324 FS VisionPro 324. 8 Way LCD monitor support, (4 below, 4 above), 710mm (28") pole, free standing base. Black finish.

EMVP324 DC VisionPro 324. 8 Way LCD monitor support, (4 below, 4 above), 710mm (28") pole, desk clamp fitting. Black finish.

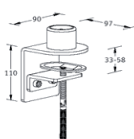
EMVP324 TD VisionPro 324. 8 Way LCD monitor support, (4 below, 4 above), 710mm (28") pole, bolt through desk fitting. Black finish.



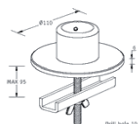
EMVP3-VESA EXT Set of 2 offset VESA extension plates to extend the maximum monitor width on triple horizontal configurations to 515mm per monitor.



Free Standing Base Dimensions 450mm x 330mm x 6mm
 Weight 4kg
 Finish Black



Desk Clamp Dimensions on desk 110mm x 110mm
 Max desk thickness 58mm
 Finish Black



Bolt Through Dimensions on desk 100mm diameter
 Max desk thickness 95mm
 Finish Black