



24"



508mm



530mm



+25°/-90°



+/- 180°



L/P



Black, grey  
or medical  
white



No



No



12.7kg



3Years  
(1 year on  
cylinder)



VESA 75x75mm  
100x100mm



## Elite with Quicklink Adjustable LCD Ceiling Mount

*The Elite series of ceiling mounted hospital LCD TV / monitor mounting solutions incorporate revolutionary design features allowing monitor weights of upto 12.7kg to be supported whilst providing effortless movement.*

*Each model provides 530mm (21") of finger touch vertical movement via the gas assisted arm. Available with 127mm (5"), 300mm (12"), 600mm (24") or 910mm (36") pole drops. Each Elite ceiling mount has 360° screen swivel, 25° of upward tilt and 90° downward tilt. As a fully cable managed monitor mounting solution, the arm is ideal in hospital and dental environments.*



see it your way...

T +44 (0)1252 333326 F +44 (0)1252 330006  
E sales@ergomounts.co.uk

[www.ergomounts.co.uk](http://www.ergomounts.co.uk) [www.medicalmounts.co.uk](http://www.medicalmounts.co.uk)

- Height and reach adjustable LCD/monitor ceiling mount.
- Monitor can move from landscape to portrait.
- Gas assisted user adjustment allows repositioning by patients and clinicians alike.
- Designed to meet modern healthcare infection control standards and to be cleaned with hospital grade / chlorine based bleach cleaning solutions (Max 10,000 parts per 1,000,000).
- Use within all clinical areas including operating theatres, recovery, dental, wards etc.
- Widely used for Patient Vu / personal patient TV applications.
- Universal VESA 75mm x 75mm and 100mm x 100mm interface supports LCD monitors / LCD TVs and LCD based patient clinical review equipment up to 12.7kg.
- Cables route neatly through the length of the arm and allow cables to route through the pole and exit through the ceiling plate.
- 127mm (5"), 300mm (12"), 600mm (24") and 910mm (36") drop poles versions available to suit different ceiling heights.
- Chrome finishing ring available for installations in false ceilings.
- Optional large handle increases the ease of repositioning the attached equipment.
- Finished in light grey, medical white or black.



## Specifications

Arm Ext.:	<b>508mm</b>
Monitor Height Adjust:	<b>530mm</b>
Tilt Adjustment:	<b>+25°/-90°</b>
Monitor Swivel:	<b>+/-180°</b>
Monitor Orientation:	<b>Landscape to Portrait</b>
Colour:	<b>Black, medical white or grey</b>
Touch Screen Stable:	<b>No</b>
Keyboard and Mouse Tray:	<b>No</b>
Max Monitor Weight:	<b>12.7kg</b>
Product Warranty:	<b>3 Years (1 year on cylinder)</b>



*see it your way...*

T +44 (0)1252 333326 F +44 (0)1252 330006  
E sales@ergomounts.co.uk

[www.ergomounts.co.uk](http://www.ergomounts.co.uk) [www.medicalmounts.co.uk](http://www.medicalmounts.co.uk)



- | Part Number              | Description  |
|--------------------------|--|
| <b>EMELQ5120-C8X5-QG</b> | Elite with Quicklink LCD ceiling mount. 127mm (5") pole drop. VESA 75mm x 75mm and 100mm x 100mm. Supports up to 12.7kg in weight. Light grey finish.    |
| <b>EMELQ5120-C8X5-TB</b> | Elite with Quicklink LCD ceiling mount. 127mm (5") pole drop. VESA 75mm x 75mm and 100mm x 100mm. Supports up to 12.7kg in weight. Black finish.         |
| <b>EMELQ5120-C8X5-MW</b> | Elite with Quicklink LCD ceiling mount. 127mm (5") pole drop. VESA 75mm x 75mm and 100mm x 100mm. Supports up to 12.7kg in weight. Medical white finish. |



- |                           |   |
|---------------------------|---|
| <b>EMELQ5120-C8X12-QG</b> | Elite with Quicklink LCD ceiling mount. 300mm (12") pole drop. VESA 75mm x 75mm and 100mm x 100mm. Supports up to 12.7kg in weight. Light grey finish.    |
| <b>EMELQ5120-C8X12-TB</b> | Elite with Quicklink LCD ceiling mount. 300mm (12") pole drop. VESA 75mm x 75mm and 100mm x 100mm. Supports up to 12.7kg in weight. Black finish.         |
| <b>EMELQ5120-C8X12-MW</b> | Elite with Quicklink LCD ceiling mount. 300mm (12") pole drop. VESA 75mm x 75mm and 100mm x 100mm. Supports up to 12.7kg in weight. Medical white finish. |



- |                           |   |
|---------------------------|---|
| <b>EMELQ5120-C8X24-QG</b> | Elite with Quicklink LCD ceiling mount. 600mm (24") pole drop. VESA 75mm x 75mm and 100mm x 100mm. Supports up to 12.7kg in weight. Light grey finish.    |
| <b>EMELQ5120-C8X24-TB</b> | Elite with Quicklink LCD ceiling mount. 600mm (24") pole drop. VESA 75mm x 75mm and 100mm x 100mm. Supports up to 12.7kg in weight. Black finish.         |
| <b>EMELQ5120-C8X24-MW</b> | Elite with Quicklink LCD ceiling mount. 600mm (24") pole drop. VESA 75mm x 75mm and 100mm x 100mm. Supports up to 12.7kg in weight. Medical white finish. |



Part Number	Description
<b>EMELQ5120-C8X36-QG</b>	Elite with Quicklink LCD ceiling mount. 910mm (36") pole drop. VESA 75mm x 75mm and 100mm x 100mm. Supports up to 12.7kg in weight. Light grey finish.
<b>EMELQ5120-C8X36-TB</b>	Elite with Quicklink LCD ceiling mount. 910mm (36") pole drop. VESA 75mm x 75mm and 100mm x 100mm. Supports up to 12.7kg in weight. Black finish.
<b>EMELQ5120-C8X36-MW</b>	Elite with Quicklink LCD ceiling mount. 910mm (36") pole drop. VESA 75mm x 75mm and 100mm x 100mm. Supports up to 12.7kg in weight. Medical white finish.



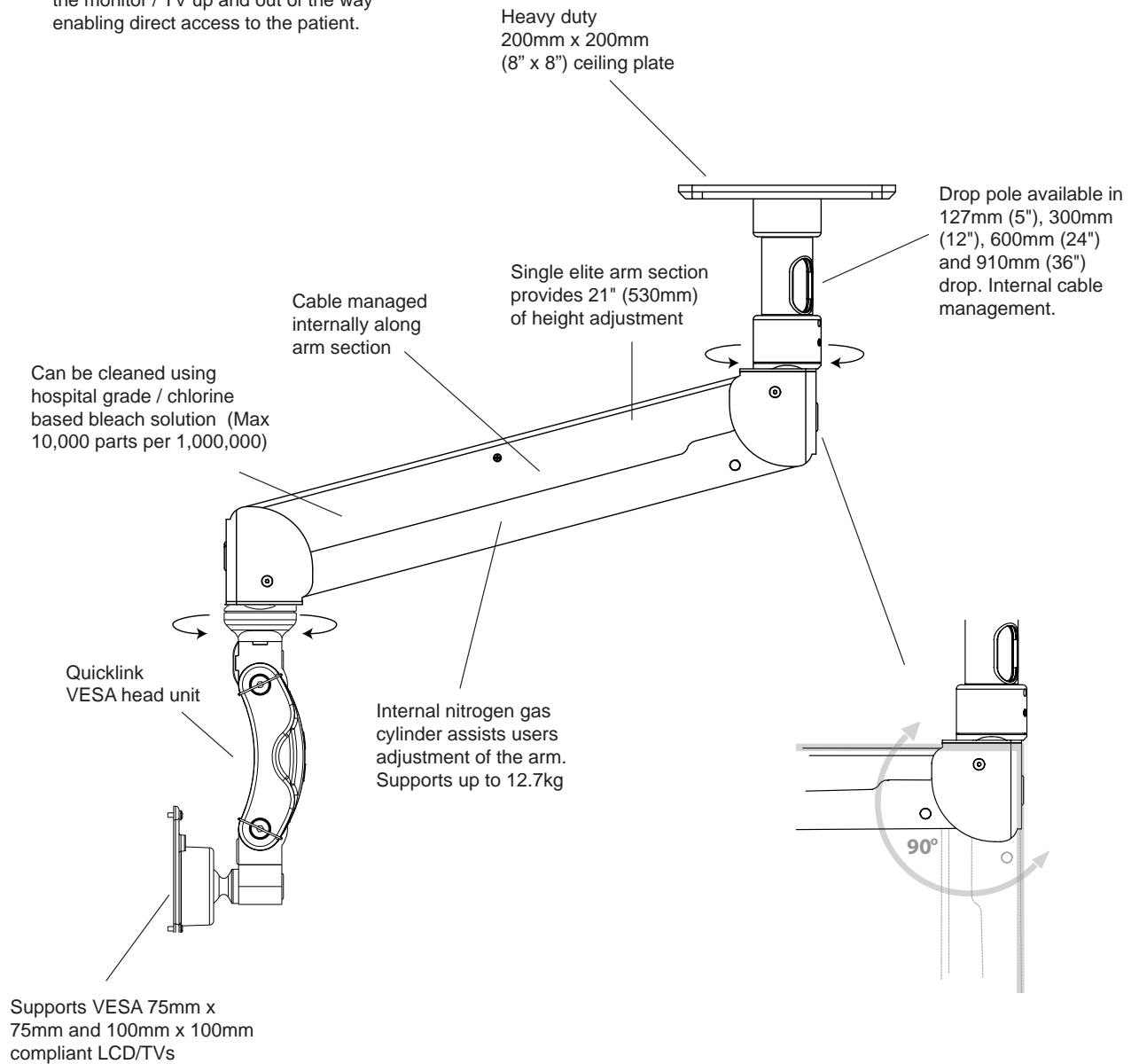
<b>EMB0500-0003-CH</b>	Chrome finishing ring for Titan, T2 Elite and Elite Ceiling Mounts.
------------------------	---



<b>EMTHBV-QG</b>	Paralink and Quicklink large grab handle. Grey finish.
<b>EMTHBV-TB</b>	Paralink and Quicklink large grab handle. Black finish.
<b>EMTHBV-MW</b>	Paralink and Quicklink large grab handle. Medical white finish.



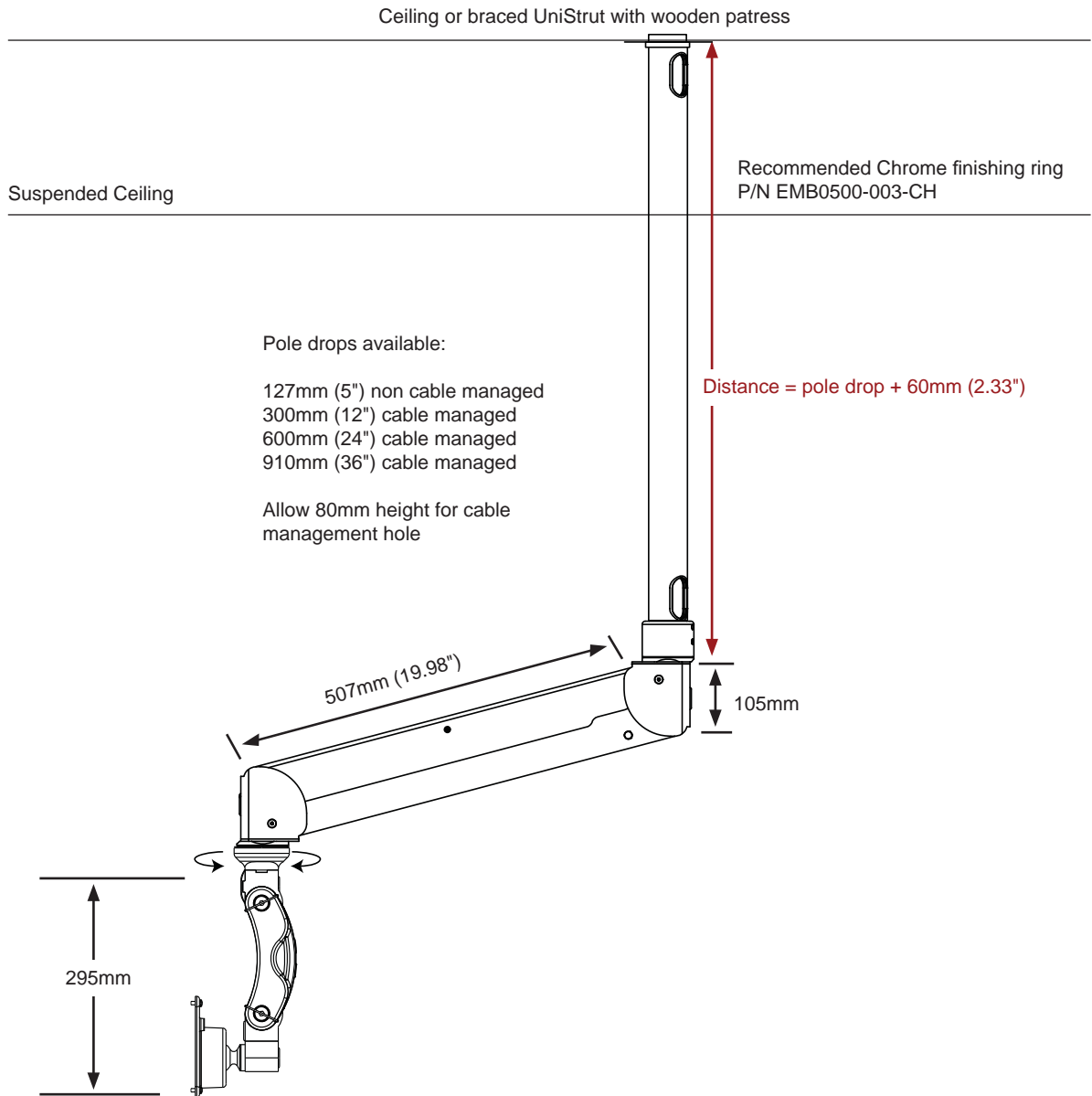
The Elite with Quicklink LCD ceiling mount is highly adjustable. The internal nitrogen gas cylinder enables users to adjust the height and reach of the attached LCD monitor / TV with ease. In cases of clinical emergencies staff can immediately swing the monitor / TV up and out of the way enabling direct access to the patient.



### Finishes



EMELQ5120 LCD Ceiling Mount



The specifying guide above is designed to assist in determining the most appropriate length of pole drop. The EMELQ LCD ceiling mount is suitable for use within many medical based environments including OR theatres, EPRS, and ward based patient use and therefore it's not possible to provide a single recommended height due to the varying nature of each application.

Should you require assistance in specifying the correct pole drop for your specific application / environment then please contact:

01252 333326.